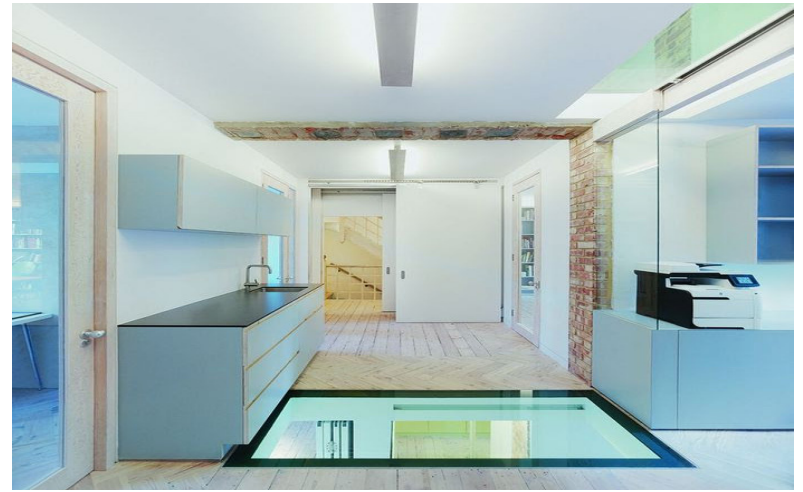


## SAFEGUARD

- Moisture resistant
- Walk on floors, stair treads, and skylights
- Bespoke engineering structures
- Large or irregular shaped glass lamination
- Acoustic glass
- Anti-bandit
- Bullet resistance



## SAFEGUARD DECORATIVE

- Artistic and heritage applications
- Decorative door glass
- Home interiors
- Decorative and colored interlayers
- Restaurants, bars, club, nightclubs and shop interiors

## SAFEGUARD VISION

- Self build projects
- High end residential
- Minimalist balustrading projects
- Moisture resistant
- Shower screens



The SGL workshop is based in Taunton, Somerset. We can offer competitive trade prices for laminated structural glass to glaziers, builders and fabricators in the South West of England.

SGL has over 15 years experience designing, fitting and beautiful glass for architects, interior designers, environmental engineers in prestigious and interesting private and public projects.

Unit 3 // Venture Way // Priorswood Industrial Estate // Taunton // Somerset // TA2 8DE

TEL: 01823 337755

E-mail: [info@specialistglasslaminates.com](mailto:info@specialistglasslaminates.com)

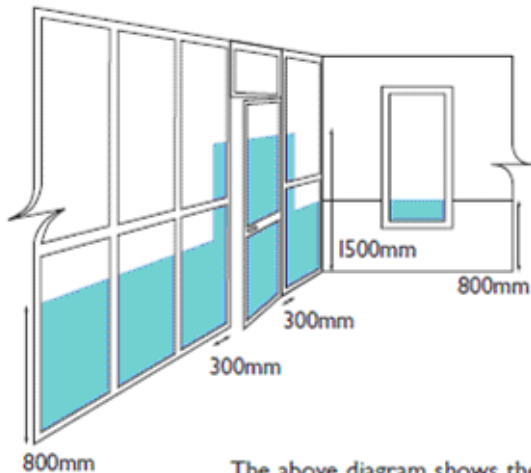
Website: [www.specialistglasslaminates.com](http://www.specialistglasslaminates.com)



## The right glazing in the right place

Laminated glass is two or more sheets of ordinary or heat treated glass bonded together using interlayers. Its most significant feature is that, if the glass fractures or impact, the fragments will remain bonded to the interlayer, minimising the risk of injury from flying glass, and maintaining a protective barrier.

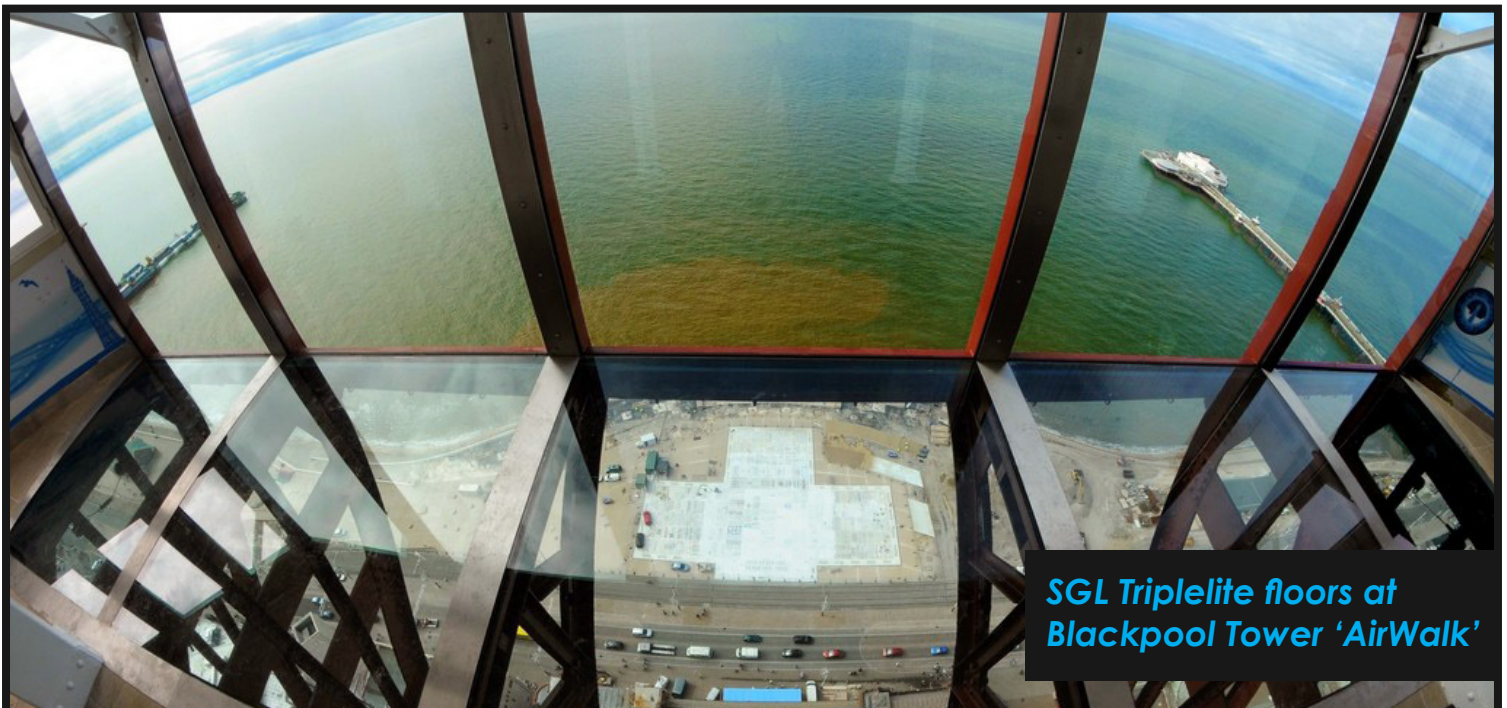
### Mandatory safety glazing areas



The above diagram shows the critical areas where safety glazing materials, such as toughened glass, must be used in new and replacement glazing applications in all buildings under the following law and codes of practice

### Mandatory Safety Glazing Areas Where laminated glass should be installed

- Approved Document N of the Building Regulations
- Enforced under the Consumer Protection Act 1987
- BS 6262 Part 4 Glazing for Buildings
- BS 6180 Code of Practice for Protection Barriers in and about Buildings
- Overhead glazing
- Barriers at home or in public spaces
- Public areas



**SGL Triplelite floors at  
Blackpool Tower 'AirWalk'**

SGL manufacture and supply beautiful structural glass floors, fire floors, glass walls, balustrades and roof lights discerning to customers through the United Kingdom, Ireland, Europe and the Middle East.

Unit 3 // Venture Way // Priorswood Industrial Estate // Taunton // Somerset // TA2 8DE

TEL: 01823 337755

E-mail: [info@specialistglasslaminates.com](mailto:info@specialistglasslaminates.com)

Website: [www.specialistglasslaminates.com](http://www.specialistglasslaminates.com)

